



jordanfishwick

Station Road

£1,250 PCM



Station Road, Wilmslow, SK9

1BU

£1,250 PCM



The Property

AVAILABLE END FEBRUARY PART FURNISHED - VIEWING ESSENTIAL TO APPRECIATE

Only a short stroll to Wilmslow town centre and a stones throw to the train station is this beautifully presented two double bedroom two bathroom ground floor apartment.

Communal entrance, private entrance hallway with utility cupboard with washing machine, open plan living room and contemporary fitted kitchen with electric hob and oven, dishwasher and fridge freezer, double bedroom with en-suite shower room, second double bedroom and bathroom with shower over bath.

Secure underground gated parking

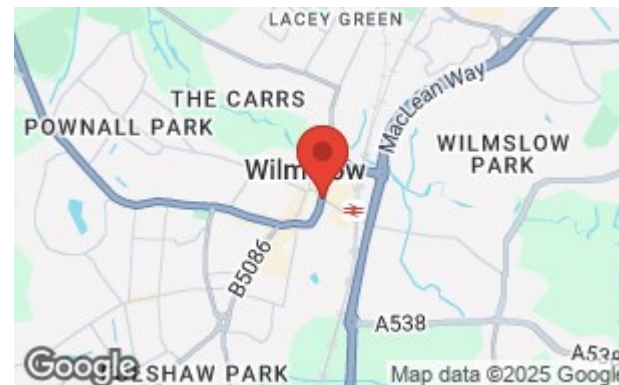
Contact Wilmslow 01625 536300 £1250.00pcm

COUNCIL TAX D

EPC D

Directions

SK9 1BU



- GROUND FLOOR APARTMENT
- CENTRAL LOCATION
- STONE'S THROW FROM WILMSLOW TRAIN STATION
- PARKING
- TWO DOUBLE BEDROOMS
- ENSUITE BATHROOM TO MAIN BEDROOM
- COUNCIL TAX D
- EPC D

Postcode - SK9 1BU

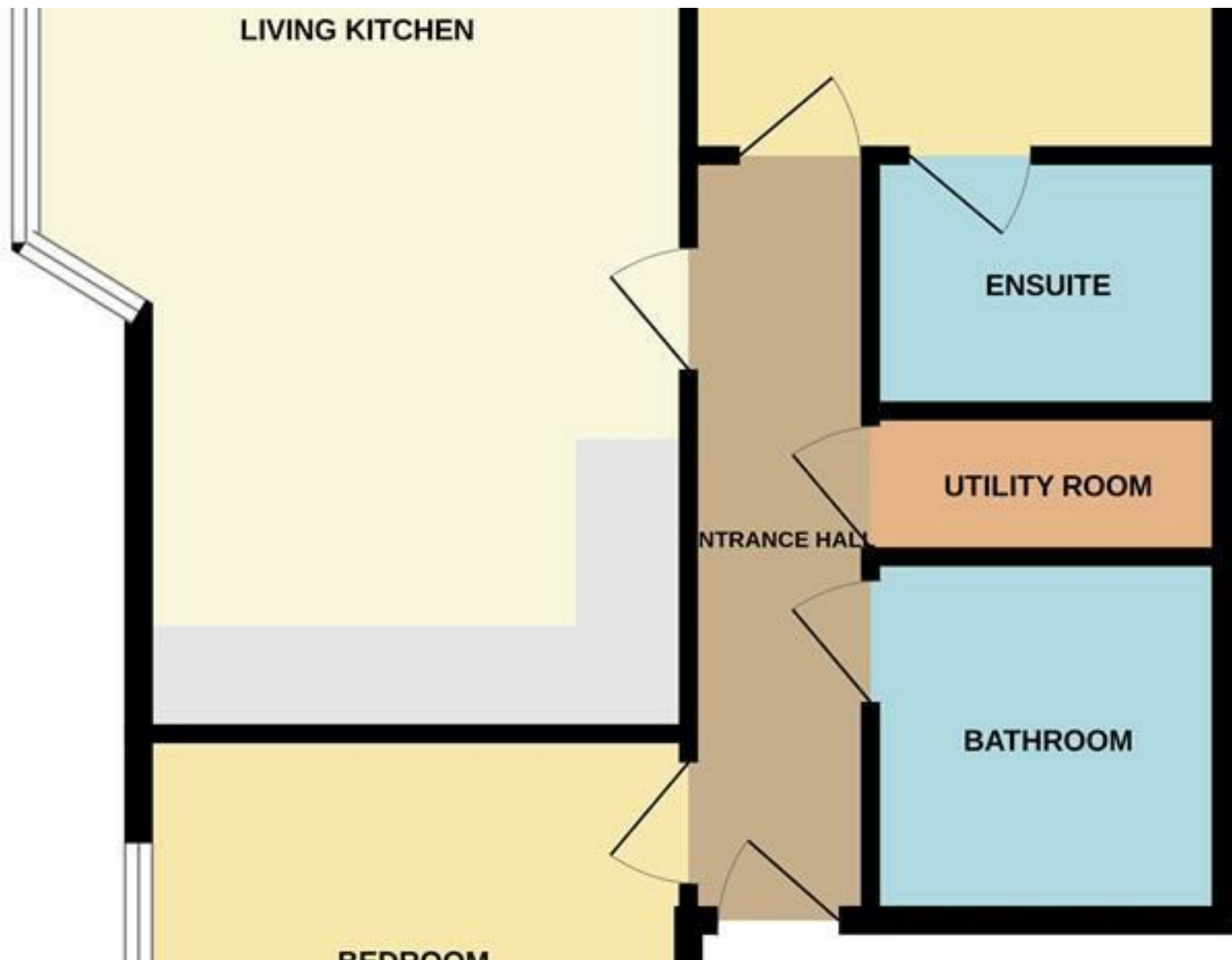
EPC Rating - D

Floor Area - sq ft

Local Authority - Cheshire East

Council Tax - D





These particulars are believed to be accurate but they are not guaranteed and do not form a contract. Neither Jordan Fishwick nor the vendor or lessor accept any responsibility in respect of these particulars, which are not intended to be statements or representations of fact and any intending purchaser or lessee must satisfy himself by inspection or otherwise as to the correctness of each of the statements contained in these particulars. Any floorplans on this brochure are for illustrative purposes only and are not necessarily to scale.

Offices at: Chorlton, Didsbury, Disley, Hale, Glossop, Macclesfield, Manchester Deansgate, Manchester Whitworth Street, New Mills, Sale, Wilmslow and Withington

01625 536300